

♩ = 60~

1

Two staves of music. The first staff contains four measures of eighth-note triplets, each marked with a '3' below it. The second staff contains four measures of eighth-note triplets, each marked with a '3' below it.

2

Two staves of music. The first staff contains four measures of eighth-note triplets, each marked with a '3' below it. The second staff contains four measures of eighth-note triplets, each marked with a '3' below it.

3

Two staves of music. The first staff contains four measures of eighth-note triplets, each marked with a '3' below it. The second staff contains four measures of eighth-note triplets, each marked with a '3' below it.

4

Two staves of music. The first staff contains four measures of eighth-note triplets, each marked with a '3' below it. The second staff contains four measures of eighth-note triplets, each marked with a '3' below it.

5

Two staves of music. The first staff contains four measures of eighth-note triplets, each marked with a '3' below it. The second staff contains four measures of eighth-note triplets, each marked with a '3' below it.

6

Two staves of music. The first staff contains four measures of eighth-note triplets, each marked with a '3' below it. The second staff contains four measures of eighth-note triplets, each marked with a '3' below it.

Two staves of music. The first staff contains four measures of eighth-note triplets, each marked with a '3' below it. The second staff contains four measures of eighth-note triplets, each marked with a '3' below it.

7

Exercise 7: Two staves of bass clef music. The first staff contains two measures of music with eighth notes and triplets. The second staff contains two measures of music with eighth notes and triplets, ending with a double bar line and repeat dots.

8

Exercise 8: One staff of bass clef music. It contains two measures of music with eighth notes and triplets.

9

Exercise 9: Two staves of bass clef music. The first staff contains two measures of music with eighth notes and triplets. The second staff contains two measures of music with eighth notes and triplets.

10

Exercise 10: Three staves of bass clef music. The first staff contains two measures of music with eighth notes and triplets. The second staff contains two measures of music with eighth notes and triplets. The third staff contains two measures of music with eighth notes and triplets, ending with a double bar line and repeat dots.

11

Exercise 11: Two staves of bass clef music. The first staff contains two measures of music with eighth notes and triplets. The second staff contains two measures of music with eighth notes and triplets, ending with a double bar line and repeat dots.

12

Exercise 12: Two staves of bass clef music. The first staff contains two measures of music with eighth notes and triplets. The second staff contains two measures of music with eighth notes and triplets, ending with a double bar line and repeat dots.

13

Exercise 13 consists of two staves of bass clef music. The first staff contains two measures of eighth-note triplets. The second staff contains two measures of eighth-note triplets, ending with a repeat sign.

14

Exercise 14 consists of two staves of bass clef music. The first staff contains two measures of eighth-note triplets. The second staff contains two measures of eighth-note triplets, ending with a repeat sign.

15

Exercise 15 consists of two staves of bass clef music. The first staff contains two measures of eighth-note triplets. The second staff contains two measures of eighth-note triplets, ending with a repeat sign.

16

Exercise 16 consists of two staves of bass clef music. The first staff contains two measures of eighth-note triplets. The second staff contains two measures of eighth-note triplets, ending with a repeat sign.

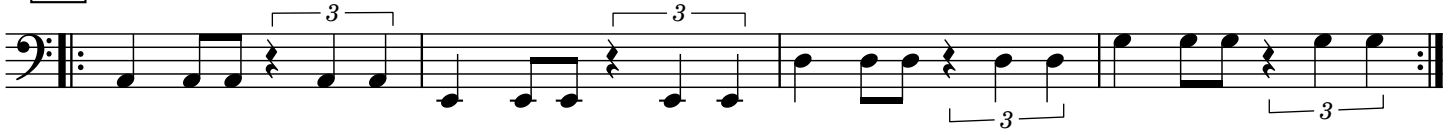
17

Exercise 17 consists of two staves of bass clef music. The first staff contains two measures of eighth-note triplets. The second staff contains two measures of eighth-note triplets, ending with a repeat sign.

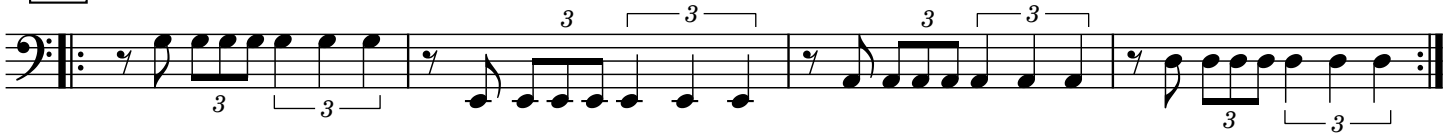
18

Exercise 18 consists of two staves of bass clef music. The first staff contains two measures of eighth-note triplets. The second staff contains two measures of eighth-note triplets, ending with a repeat sign.

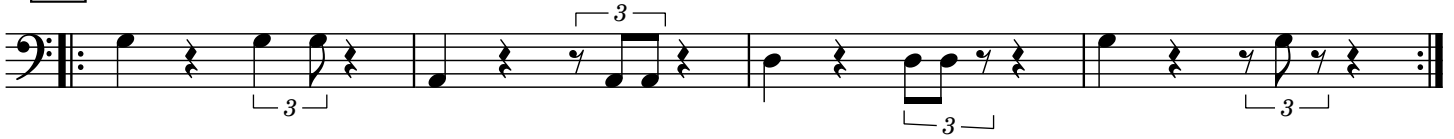
19



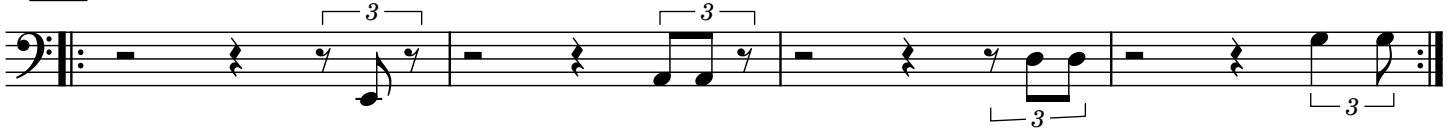
20



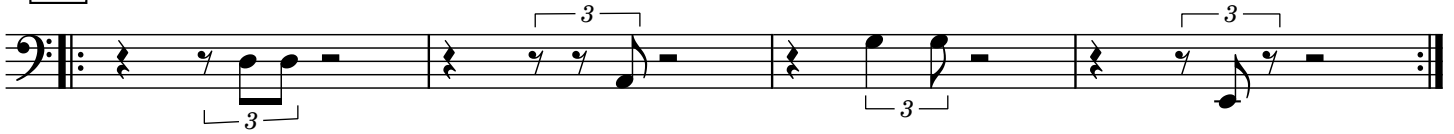
21



22



23



24

