

G弦 ♩ = 60~

①

②

③ ④ ⑤

⑥ ⑦ ⑧

D弦

①

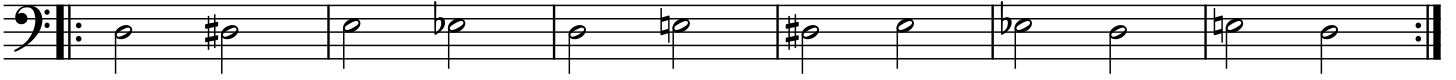
②

③ ④ ⑤

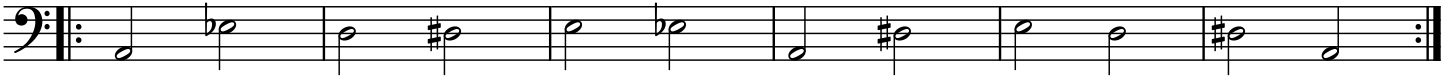
⑥ ⑦ ⑧

A弦

①



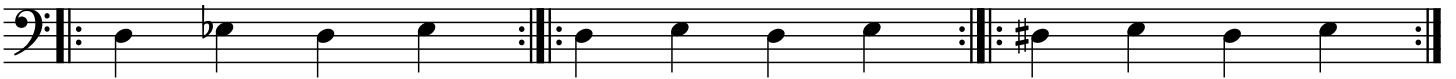
②



③

④

⑤



⑥

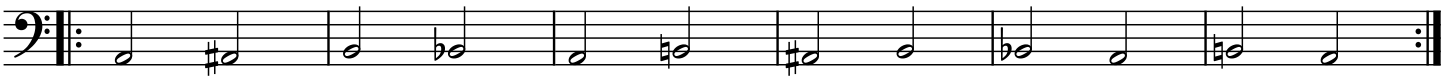
⑦

⑧

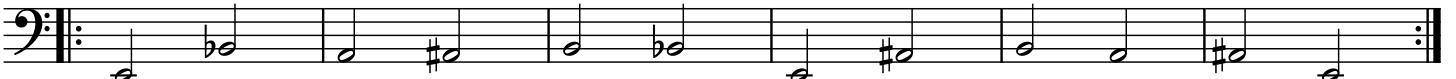


E弦

①



②



③

④

⑤



⑥

⑦

⑧



♩ = 60~

①

Exercise 1: A bass clef staff with a repeat sign. The notes and fingerings are: G2 (4), F2 (b2), E2 (1), D2 (4), C2 (b2), B1 (1), A1 (4), G1 (2), F1 (1), E1 (4), D1 (2), C1 (1).

Exercise 2: A bass clef staff with a repeat sign. The notes and fingerings are: D2 (1), E2 (2), F2 (4), G2 (1), A2 (2), B2 (4), C3 (1), D3 (2), E3 (4), F3 (1), G3 (2), A3 (4).

②

Exercise 3: A bass clef staff with a repeat sign. The notes and fingerings are: D2 (1), E2 (2), F2, G2, A2, B2, C3 (b2), B2 (1), A2, G2, F2, E2, D2.

③

Exercise 4: A bass clef staff with a repeat sign. The notes and fingerings are: D2 (1), E2 (4), F2, G2, A2, B2, C3 (4), B2 (1), A2, G2, F2, E2, D2.

④

Exercise 5: A bass clef staff with a repeat sign. The notes and fingerings are: D2 (2), E2 (4), F2, G2, A2, B2, C3 (4), B2 (b2), A2, G2, F2, E2, D2.

⑤

Exercise 6: A bass clef staff with a repeat sign. The notes and fingerings are: D2 (1), E2 (2), F2, G2, A2, B2, C3 (1), B2 (b2), A2, G2, F2, E2, D2.

⑥

Exercise 7: A bass clef staff with a repeat sign. The notes and fingerings are: D2 (1), E2 (4), F2, G2, A2, B2, C3 (1), D3 (4), E3, F3, G3, A3, B3, C4.

⑦

Exercise 8: A bass clef staff with a repeat sign. The notes and fingerings are: D2 (2), E2 (4), F2, G2, A2, B2, C3 (b2), B2 (4), A2, G2, F2, E2, D2.

⑧

Exercise 9: A bass clef staff with a repeat sign. The notes and fingerings are: D2 (1), E2 (2), F2 (4), G2, A2, B2, C3 (1), D3 (2), E3 (4), F3, G3, A3, B3, C4.